

Security Solutions

OpenOTP™ RADIUS Bridge

INTEGRATE A LARGE VARIETY OF THIRD-PARTY PRODUCTS AND SYSTEMS WITH MULTI-FACTOR AUTHENTICATION

- What is RADIUS Bridge?
- What does it support?

OpenOTP RADIUS Bridge provides the RADIUS RFC-2865 (Remote Authentication Dial-in User Service) API for your OpenOTP server. With RADIUS Bridge you can integrate a large variety of third-party products and systems with multi-factor authentication. Many Enterprise products and services like Microsoft reverse-proxies, VPNs, Citrix or even VMWare support RADIUS for a more flexible user authentication.

RADIUS Bridge supports several ways the user can provide the credentials for multi-factor authentication. For example, password and OTP can be provided concatenated or asked one by one using RADIUS challenge. With OpenOTP client policies, you can define single or multi-factor authentication, based on flexible criteria, such as IP, geolocation, time, etc.

RADIUS Bridge supports X.509 certificate-based authentication for network access control for **Wi-Fi and LAN networks** using 802.1X and OCSP for certificate revocation.

MAIN KEY FEATURES RADIUS integrations support all OpenOTP features

- ✓ 100% compatible with RADIUS standard (RFC-2865)
- ✓ Robust implementation built with FreeRadius
- ✓ OTP with challenge-response or password concatenation
- ✓ Supports any RADIUS vendor dictionary
- ✓ Supports MS Domain-style login names (i.e. Domain\Username)
- ✓ Supports MS User Principal Names
- ✓ Supports OpenOTP contextual authentication
- ✓ Per-user and group reply attributes for VPNs (ACL, roles)
- ✓ Authentication policies per client application or group of users
- ✓ OCSP support for certificate revocation
- ✓ Standalone service with no additional OpenOTP configuration required
- ✓ High performances with hundreds of requests per second
- ✓ Cluster support with multiple bridges for HA
- ✓ Wi-Fi and LAN networks access control
- ✓ Bridges all the OpenOTP functionalities (OTP-Tokens, Yubikey, SMSOTP, MailOTP...)

- How to secure your Radius client endpoint

RADIUS INTEGRATIONS

RADIUS Bridge provides the RADIUS interface on top of OpenOTP server. And it is included in your OpenOTP license at no extra charge. The RADIUS standard is supported by all major security products on the market. You can also implement OpenOTP authentication methods for:

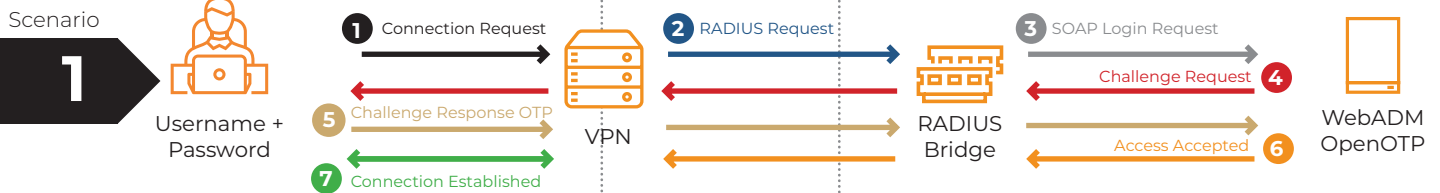
- ✓ VPN Servers (Checkpoint, Cisco, Nortel, F5, Fortigate, Palo Alto...)
- ✓ Microsoft DirectAccess VPN
- ✓ Citrix (Access Gateway, XenApp, Netscaler)
- ✓ VMWare View
- ✓ Microsoft Reverse-Proxies (TMG, UAG, 2012 server...)
- ✓ Enterprise Wifi (Cisco EAP-GTC, EAP-TLS and EAP-TTLS)
- ✓ Radius-enabled Linux services (OpenVPN, Apache...)
- ✓ And many others...

- VPN Authentication with OpenOTP and Radius Bridge

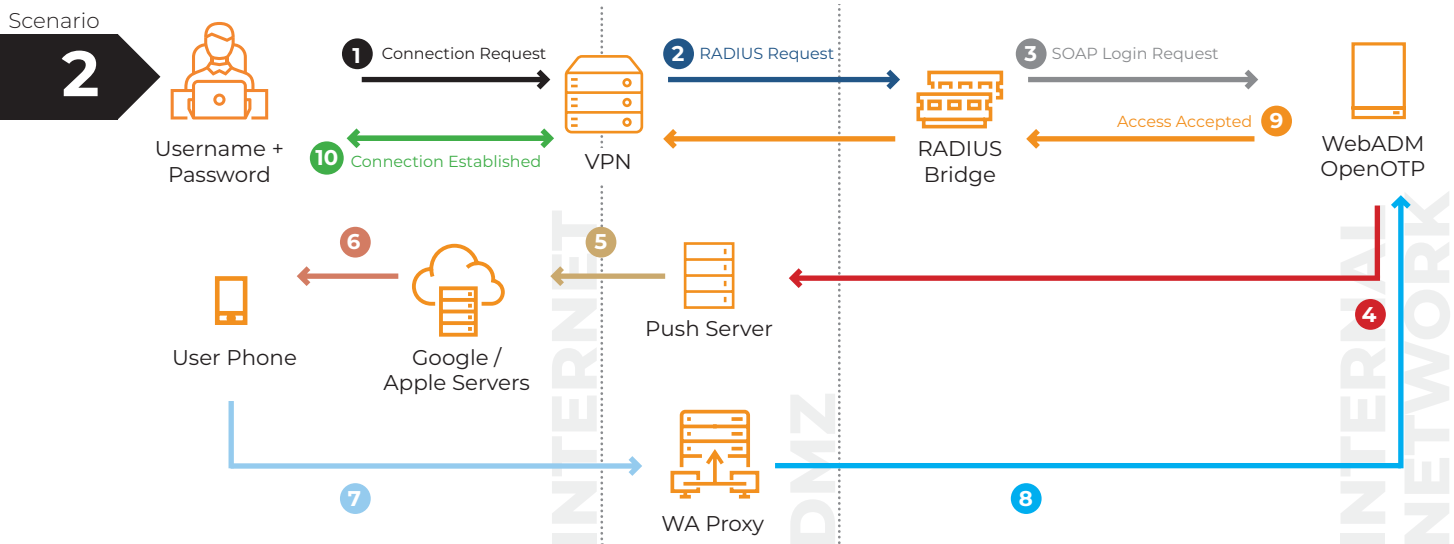
ARCHITECTURE DIAGRAMS

See below the OpenOTP RADIUS architecture diagrams. Scenario one shows a typical OpenOTP integration with an enterprise VPN server. Scenario two includes the WAProxy mobile-to-server communication component which is necessary to enable OpenOTP One-Tap login with Approve/ Deny:

VPN authentication with OpenOTP, Radius Bridge and OTP Challenge



VPN authentication with OpenOTP, Radius Bridge, WAProxy and Push Token



RCDevs
Security Solutions

RCDevs is an award-winning security company specialized in next-generation two-factor authentication. RCDevs is building its growing reputation over high-quality security software and its customers' entire satisfaction.

MULTIPLE AWARD-WINNING

RCDevs received the Sesames Award for the Best Innovation Discovery, the Commendation Award at SC Magazine for the Best SME Security Solution.

1 avenue du Blues
L-4368 Belvaux
Luxembourg
☎ **+352 26 17 61 21**
☎ **+33 (0)9 72 14 52 97**
www.rcdevs.com